

+ 5'45



Key to Common Adult Stored Product Pests

1a

Soft-bodied moth with four flexible wings covered in powdery scales that are folded when not flying... 2.

Fig. 1 Indian meal moth top



Fig. 2 Indian meal moth side



1b

Hard-bodied beetle with two shell-like wings that cover two soft, membrane-like wings underneath... 4.

Fig. 3 Cigarette beetle top



Fig. 4 Cigarette beetle side



2a

Small moth ~5-6mm long, all wings are a light tan color, underwing narrow with a long fringe of hair. **Angoumios Grain Moth**

Fig. 5 Angoumios grain moth top



Fig. 6 Angoumios grain moth bottom



[back wing fringes]



Fig. 7 Angoumios grain moth wings

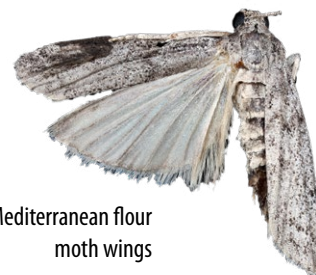
2b

Medium sized moth ~8-15mm. Front and back wings are different colors, underwing without long fringe of hair... 3.

Fig. 8 Indian meal moth wings



Fig. 9 Mediterranean flour moth wings



3a

Medium-sized moth ~8-12mm long, two-toned front wings are grey at the top and copper colored on the bottom 2/3rds. Underwings are grey. Indian Meal Moth

Fig. 10 Indian meal moth top



Fig. 11 Indian meal moth side



3b

Medium-sized moth ~10-15mm long, front wings are black and grey. Underwings are light tan. Mediterranean Flour Moth

Fig. 12 Mediterranean flour moth top



Fig. 13 Mediterranean flour moth side



4a

Beetle with a long snout like an anteater... 5.

Fig. 14 Granary weevil top



Fig. 15 Granary weevil side



4b

Beetle without a long snout... 6.

Fig. 16 Larger grain borer side



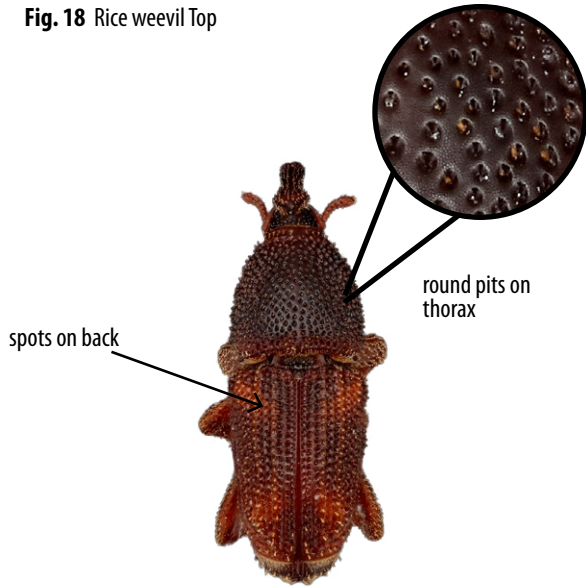
Fig. 17 Bean weevil side



5a

Four light-brown spots on wings, pits on thorax round, 2-3mm long. **Maize or Rice Weevil**

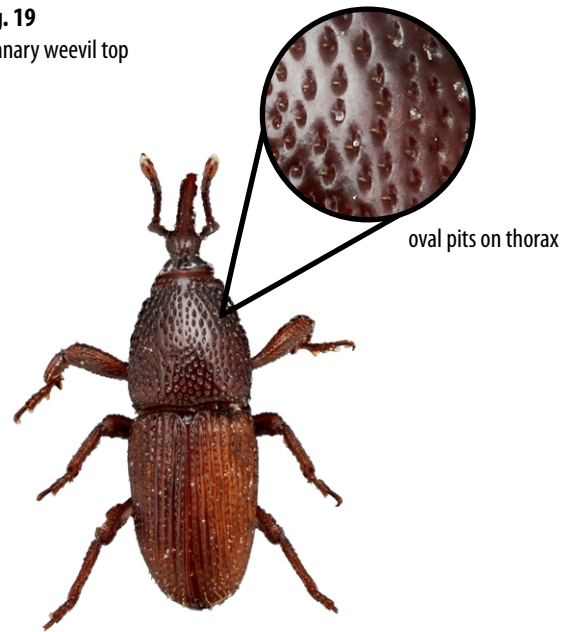
Fig. 18 Rice weevil Top



5b

Wings and body are a uniform brown with no spots, pits on thorax oval. Body 3-5mm long. **Granary Weevil**

Fig. 19 Granary weevil top



6a

Spider-like with round, wingless body and six legs. Body 1.5-3.5mm long. **Spider Beetle**

Fig. 20 Spider beetle top



Fig. 21 Spider beetle bottom



Fig. 22 Spider beetle side



6b

Beetle not spider-like...7

Fig. 23 Merchant grain beetle top



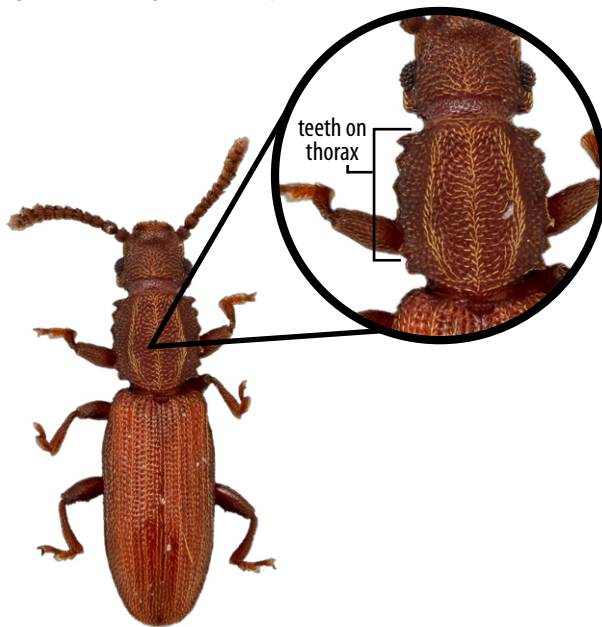
Fig. 24 Warehouse beetle top



7a

Thorax has six tooth-like projections on the sides...8.

Fig. 25 Sawtooth grain beetle top



7b

Thorax without six tooth-like projections on the sides...9.

Fig. 26

Red flour beetle top

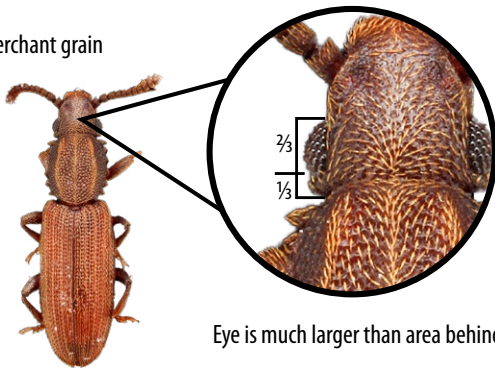


Fig. 27 Drugstore beetle top

8a

The eye is much larger than the area behind it. Body ~2.5-3.5mm long. Merchant Grain Beetle

Fig. 28 Merchant grain beetle top



Eye is much larger than area behind



Fig. 29 Merchant grain beetle bottom

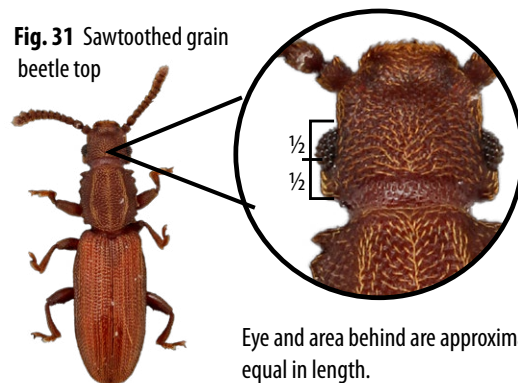


Fig. 30 Merchant grain beetle side

8b

The eye and area behind are approximately equal in length. Body ~2.5-3.5mm long. Sawtoothed Grain Beetle

Fig. 31 Sawtoothed grain beetle top



Eye and area behind are approximately equal in length.



Fig. 32 Sawtooth grain beetle bottom

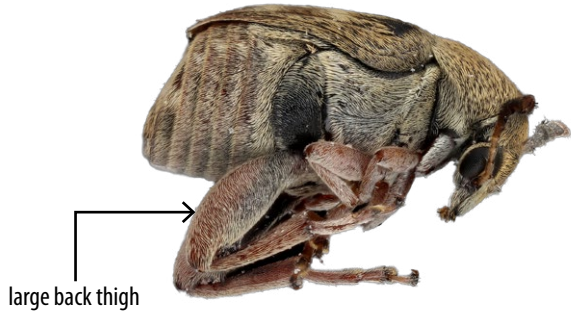


Fig. 33 Sawtooth grain beetle side

9a

Back "thigh" large...10.

Fig. 34 Bean weevil side



9b

Back "thigh" not large when viewed from the side...11

Fig. 35 Cigarette beetle side



Fig. 36 Rusty grain beetle side

10a

Body covered in short tan-to-gray hairs, body ~3-4mm long.
Bean Weevil

Fig. 37 Bean weevil side



Fig. 38 Bean weevil top



Fig. 39 Bean weevil bottom



10b

Body tan and orange with black spots, body ~4-5mm long.
Cowpea Weevil

Fig. 40 Cowpea weevil side



Fig. 41 Cowpea weevil top



Fig. 42 Cowpea weevil bottom



11a

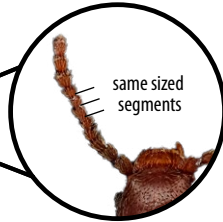
Antennae straight with all segments the same size. Small, red-brown, flattened beetle ~1.5-2mm long. **Rusty Grain Beetle**

Fig. 43 Rusty grain beetle bottom



Fig. 44 Rusty grain beetle side

Fig. 45 Rusty grain beetle top



Rusty grain beetle antennae

11b

Antennae serrated (saw-like), clubbed or elbowed...12.

Fig. 46 Cigarette beetle antennae

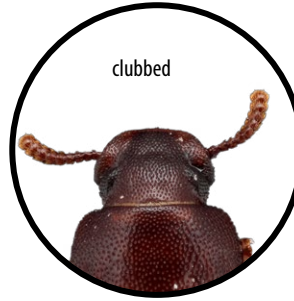
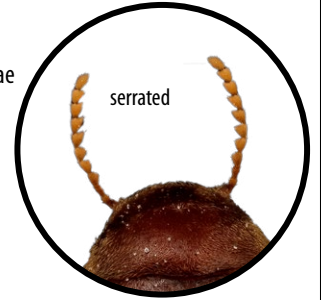


Fig. 47 Confused flour beetle antennae

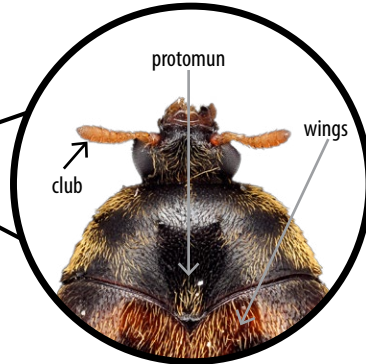
Fig. 48 Drugstore beetle



12a

Pronotum makes a V-shape where it meets the wings, pronotum and wings are tightly connected. Antennae clubbed, body covered in short hairs, multi-colors, body ~3-5mm long. **Warehouse beetle/Dermestid**

Fig. 49 Warehouse beetle top



Warehouse beetle head, pronotum and wings

Fig. 50 Warehouse beetle, bottom



Fig. 51 Warehouse beetle side

12b

Pronotum does not make V shape ("widow's peak") where it meets the wing...13.

Fig. 52 Drugstore beetle



Fig. 53 Red flour beetle



Fig. 54 Lesser grain borer

13a

While at rest, head clearly visible from above...14.

Fig. 55 Confused flour beetle top



Fig. 56 Confused flour beetle side



13b

While at rest, head not clearly visible from above...15.

Fig. 57 Drugstore beetle top



Fig. 58 Cigarette beetle side

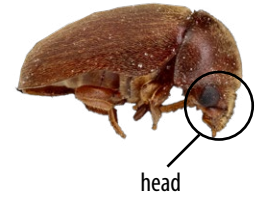
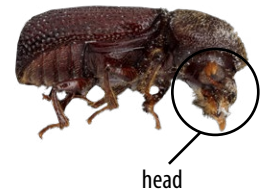


Fig. 59 Lesser grain borer top



Fig. 60 Lesser grain borer side



14a

When viewed from below, the space between the eyes is wide, with eyes only coming in as far as the base of the antennae. Eyes, when viewed from the side narrow to a single facet. Antennae gradually widen into a club. Size ~ 3.5 mm. Confused Flour Beetle

Confused flour beetle head viewed from bottom

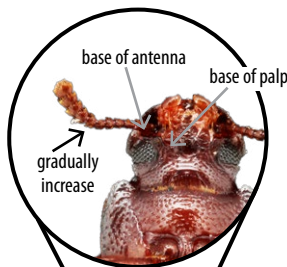


Fig. 61 Confused flour beetle bottom

Confused flour beetle head viewed from the side

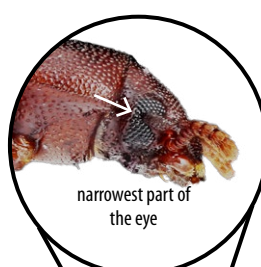


Fig. 62 Confused flour beetle top

Fig. 63 Confused flour beetle side



14b

When viewed from below, space between eyes is narrow, with eyes growing up to the base of the palps. Eyes, when viewed from the side narrow to ~4-5 facets wide. Antennae with a 3-segmented club. Size ~3.5 mm. Red Flour Beetle

Red flour beetle head viewed from bottom

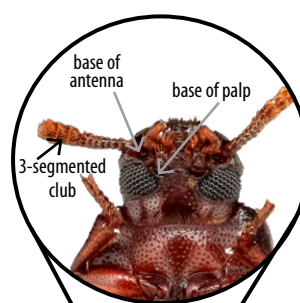


Fig. 64 Red flour beetle bottom

Red flour beetle head viewed from the side

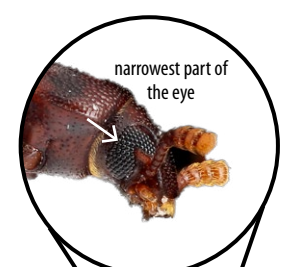


Fig. 65 Red flour beetle top

Fig. 66 Red flour beetle side



15a

Body straight-sided from above and shaped like a tube from the side...16.

Fig. 67 Lesser grain borer top

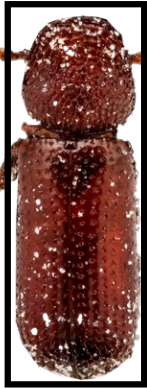


Fig. 68 Larger grain borer top

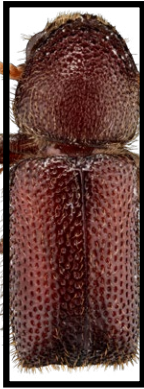


Fig. 69 Larger grain borer side

15b

Body slightly rounded when viewed from above, and shaped like a turtle from the side... 17.



Fig. 70 Cigarette beetle top

Fig. 71 Cigarette beetle side



16a

Small beetle, ~3 mm long. Butt is rounded when viewed from above. Lesser Grain Borer

Fig. 72 Lesser grain borer bottom



Fig. 73 Lesser grain borer top



16b

Larger beetle, ~4 mm long. Butt is square when viewed from above. Larger Grain Borer

Fig. 74 Larger gain borer bottom



Fig. 75 Larger grain borer top



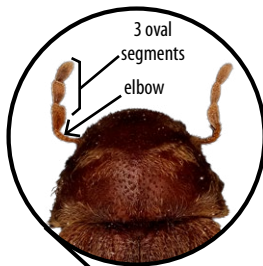
Fig. 76 Larger gain borer side



17a

Antennae elbowed with three oval segments at the end. Lines of small pits run lengthwise down the wings. Body ~2.5mm long. **Drugstore Beetle**

Drugstore beetle antennae



Magnified drugstore beetle wings with lines of pits

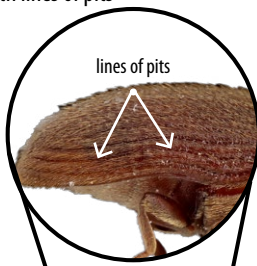


Fig. 77 Drugstore beetle bottom



Fig. 78 Drugstore beetle top

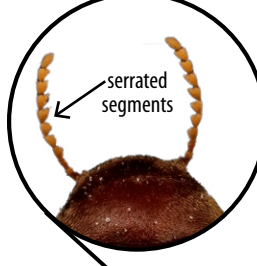


Fig. 79 Drugstore beetle side

17b

Antennae serrated like a saw blade. Wings are smooth with no lines of pits. Body ~3mm long. **Cigarette Beetle**

Cigarette beetle antennae



Magnified cigarette beetle wings with no lines of pits

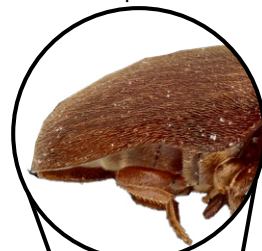


Fig. 80 Cigarette beetle bottom



Fig. 81 Cigarette beetle top



Fig. 82 Cigarette beetle side

NEED MORE INFORMATION?



Visit our web page:
[Entomology and Pest Management](#)
[Food-infesting Insects](#)



Have questions or need help?
Contact our [mailbox](#)